

# SITSTAND

FUZE BUSINESS INTERIORS

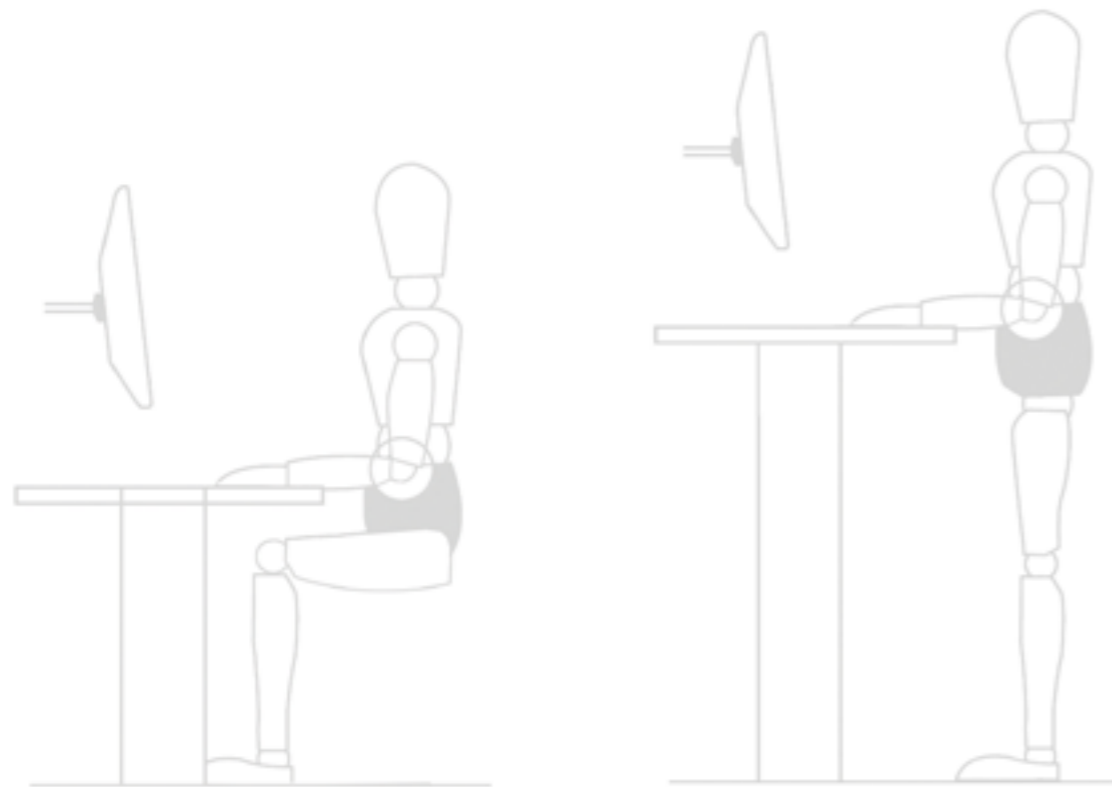
AT WORK

SIT  
STAND  
DESKS

HEALTHY  
WORK  
SPACES



AUTUMN 2021



**You can choose when to sit and when to stand so you don't get restless and uncomfortable during your work day.**

SIT STAND DESKS

# THE BENEFITS

SIT STAND DESKS IN THE WORKPLACE ARE BECOMING INCREASINGLY POPULAR IN NEW ZEALAND. THE NEGATIVE IMPACT THAT SITTING AT A DESK ALL DAY HAS ON YOUR HEALTH AND WELLBEING IS NOW COMMON KNOWLEDGE,

Let's take a look at why sit stand desks are fast becoming commonplace in the workplace:

#### **Doctors like Sit Stand Desks**

Sitting all day slows your metabolism, puts pressure on your organs, strains your muscles, and the inactivity creates lethargy and contributes to slower brain function. Studies show that even spending time at the gym each day doesn't offset the damage done by sitting all day. Alternating between sitting and standing to work has shown to decrease existing back pain, improve circulation, decrease fatigue, increase fat burning, reduce the risk of major diseases, and even prolong your life. The key is to be active and alternate between sitting and standing - even standing at your desk for just 10 minutes every hour will provide benefits.

#### **Management likes Sit Stand Desks**

Providing sit stand desk options in the workplace creates a more productive environment. Employees using sit-stand desks and break-out spaces are more likely to engage with one another in a more natural and impromptu way, providing immediate and spontaneous communication as opposed to employees in a more traditional, less fluid, and limiting environment. The health benefits gained by employees will see productivity levels rise, retention increase, and less spent on health cover overall.

#### **We all like Sit Stand Desks**

Testimonials reveal that using electric sit stand desks in the workplace can offer a liberating, social and healthy experience, which provides an overall sense of increased well-being and happiness.

# CONSET DESKS

3 YEAR WARRANTY  
On Conset frames



## CON-33 SIZES & PRICING

1200L x 700D - \$623 +GST

1600L x 750D - \$651 +GST

1800L x 8750D - \$660 +GST

## SPECIFICATIONS

Height Range: 680mm - 1180mm

Lift Capacity: up to 80kg

Frame Color: White

## DESCRIPTION

An elegant and stylish desk designed with a single telescopic open frame. The square columns give this desk a modern look, which makes it suitable for all kinds of office environments. The CON-33 is available in white only. Quick and easy to assemble.



THE CONSET RANGE OF HEIGHT ADJUSTABLE ELECTRIC DESKS AND WORKSTATIONS REPRESENT THE BEST VALUE FOR PRICE, DESIGN, AND FUNCTION. THE MOST POPULAR IN OUR RANGE OF SIT STAND DESKS, THE CONSET DESKS HAVE BEEN INSTALLED IN HOME OFFICES AND CORPORATE ENVIRONMENTS ACROSS THE COUNTRY.



## CON-43 SIZES & PRICING

1200L x 700D - \$760 +GST

1600L x 750D - \$789 +GST

1800L x 8750D - \$795 +GST

## SPECIFICATIONS

Height Range: 650mm - 1250mm

Lift Capacity: up to 100kg

Frame Color: White

## DESCRIPTION

A 2 column desk with a sophisticated look, an open double telescope frame structure and a clean cut. You can recognize the CON-43 by its square column and slender foot design. The robust frame makes the CON-43 a strong and durable desk for any office environment.



# DUO II DESKS

THE DUO II ELECTRIC DESK-SYSTEM WITH PROGRAMMABLE CONTROLLER OFFERS AN ECONOMIC ALTERNATIVE TO OUR MORE INDUSTRIAL UNITS. QUIET AND SMOOTH OPERATING THESE DESKS ARE IDEAL FOR USE AS A SINGLE HEIGHT ADJUSTABLE OFFICE DESK OR FOR MULTIPLE PODS IN AN OPEN OFFICE SPACE. 10 YR MOTOR WARRANTY.

---

## DUO II SINGLE DESK

Lift Capacity: up to 100kg  
1200W x 700D - \$685 +GST  
1600W x 750D - \$710 +GST  
1800W x 750D - \$720 +GST



# ASCEND DESKS

THE ASCEND RANGE BRINGS INDUSTRIAL STRENGTH TO A SLEEK AND ELEGANT DESIGN. HEAVY DUTY LIFT CAPACITY AND QUIET ADJUSTMENT MAKE THIS DESK A POPULAR CHOICE. IT OFFERS AN ANTI-COLLISION SAFETY FEATURE TO AVOID COLLISION DAMAGE DURING HEIGHT ADJUSTMENT AS WELL AS ADJUSTABLE LEVELING GUIDES FOR UNEVEN FLOOR. 10 YR FRAME WARRANTY.

---

## ASCEND SINGLE DESK

Lift Capacity: up to 180kg  
1300W x 700D - \$980 +GST  
1600W x 750D - \$989 +GST  
1800W x 750D - \$995 +GST



---

## ASCEND WORKSTATION

Lift Capacity: up to 270kg  
1800W x 1800W x 750D - \$1565 +GST



---

## ASCEND SPECIFICATIONS

Height Range: 620H - 1270H  
Desk widths: 1250mm - 2200mm  
Lift Capacity: 180kg - 270kg  
Frame: Black, Silver or White  
Desktops available in custom sizes.  
10 yr warranty on Ascend frames

# SUMMIT II DESKS

THE SUMMIT II IS A HIGHLY CONFIGURABLE SIT-TO-STAND DESK SYSTEM WHICH COMES IN A VST RANGE OF COLOURS, SHAPES AND SIZES. IT HAS SCALLOPED EDGE ON BACK TO BACK DESK FOR CABLE ACCESS AND THE SINGLE DESK HAS A CABLE PORT FOR CABLE ACCESS. FAST A QUIET, THESE DESKS ARE A GREAT OPTION FOR HOME OR COMMERCIAL OFFICE USE.

---

## SUMMIT II SINGLE DESK

Lift Capacity: up to 140kg  
1200W x 700D - \$790 +GST  
1600W x 750D - \$820+GST  
1800W x 750D - \$825 +GST

---

## SUMMIT II WORKSTATION

Lift Capacity: up to 210kg  
1600W x 1600W x 750D - \$1425 +GST  
1800W x 1800W x 750D - \$1475 +GST

---

## SUMMIT II 2 PERSON POD

Lift Capacity: up to 140kg ea.  
Please enquire for pricing

---

## SUMMIT II SPECIFICATIONS

Height Range: 615H - 1255H  
Speed: 30mm per second  
3 Programmable height settings  
Frame: Black, Silver or White  
Desktops available in custom sizes.  
10 yr warranty - includes motor



## PRODUCT FEATURES

- Cleverly integrated desk system
- Vast range of colours, shapes and sizes
- Top has scalloped edge on back to back desk for cable access
- Individual desk has a cable port for cable access
- 3 x programmable height settings, with LCD display
- Fast and quiet operation (30mm per second)
- Weight-rating up to 140kg
- Corner desk weight-rating up to 210kg
- 10-year warranty includes the motor

# MONITOR ARMS



THE USE OF A MONITOR ARM KEEPS YOUR NECK FROM STRAINING WHEN VIEWING YOUR SCREEN FROM A SITTING OR STANDING POSITION. NOT ONLY DOES IT PROVIDE THIS ERGONOMIC ADVANTAGE, BUT IT ALSO FREES UP VALUABLE DESK SPACE. TALK TO OUR TEAM ABOUT THE MOST SUITABLE MODEL FOR YOUR REQUIREMENTS.



C.Me Single Monitor Arm & Laptop Tray - \$297 +GST

Vader Single Monitor Arm

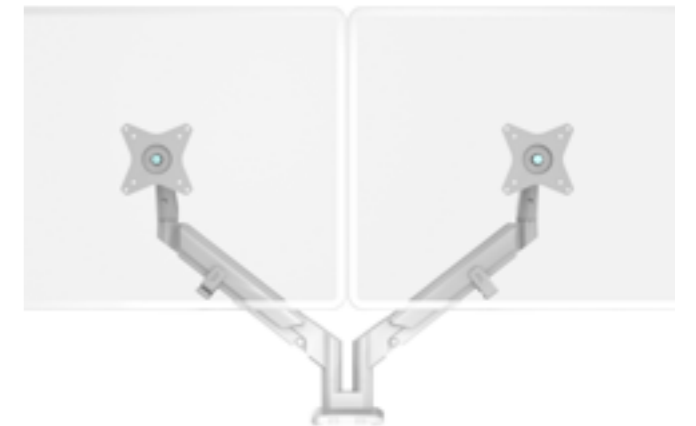
A20 Dual Post with Thin Client Mount - \$380 +GST

C-Me Single Monitor Arm - \$185 +GST

Vader Double Monitor Arm

A20 Dual Post with Thin Client Mount - \$380 +GST

C-Me Double Monitor Arm - \$239 +GST



# CPU HOLDERS

WE HAVE MOUNTS TO CONNECT CPU'S AND THIN CLIENTS UNDER THE  
DESK TOP SO THEY RISE AND FALL WITH YOU, ENSURING YOUR CABLE  
LENGTHS REMAIN CONSISTENT.



---

Sylex AWCMCS23 Mount  
\$109 +GST

---

Teale Mount  
\$79 +GST

---

CBS Jaw Mount  
\$179 +GST

---

Thin Client Mount  
\$93 +GST



SITSTAND  
DESK  
OPTIONS

# POWER OPTIONS

GET POWER TO YOUR DESK WITH MINIMAL INTRUSION WITH THESE POWER OPTIONS AND KEEP YOUR WORKSPACE FREE OF UNSIGHTLY CABLES WITH THE MOST STYLISH AND INNOVATIVE CABLE MANAGEMENT OPTION ON THE MARKET - THE CABLE SNAKE.



---

Pluto Power Module  
\$300 +GST

---

Pixel Power Module  
\$195 +GST

---

Atdek Power Module  
\$265 +GST

---

Cable Snake  
From \$180 +GST

SITSTAND  
DESK  
OPTIONS





Alternating between sitting and standing to work is the healthiest option for those in an office job. You will need an ergonomic chair to use with your sit stand desk.



# SIT STAND STOOLS AND CHAIRS

ERGONOMIC CHAIRS ARE DESIGNED TO SUPPORT THE BODY IN THE RIGHT PLACES FOR OPTIMAL HEALTH AND WELLBEING IN TODAY'S OFFICE.

---

**Sedus Quarterback**  
Multiple adjustments  
Choice of 7 colours  
Full upholstery option  
From \$559 + GST

---

**Konfurb Luna**  
Multiple adjustments  
Available in grey or black  
Polished base option  
From \$445 + GST

---

**Buro Mentor**  
Multiple adjustments  
Custom fabric option  
Polished base option  
From \$450 + GST

---

**Smile Stool**  
Upholstered seat  
Height adjustable  
Folding steel prop  
From \$595 + GST

---

**Dyna Stool**  
Gas lift height adjustment  
Moulded foam seat  
Auto return swivel seat  
From \$515 + GST

Ergonomic office chairs have become a necessary requirement in today's modern office environment. Employees who sit at a desk all day are at high risk of back injury, neck strain, lower back pain, and leg pain. We recommend alternating between sitting and standing to work using a sit stand desk in order to avoid health issues caused by sitting for too long.

When you do sit down, you can decrease the risk of associated injuries by using an ergonomic office chair. It is important that all employees who sit at a desk for any length of time have an office chair that supports the lower back and promotes good posture. A perching stool (eg. Smile, Dyna) can be used when you want to give your feet a short break but don't want to sit down.

# ABOUT FUZE

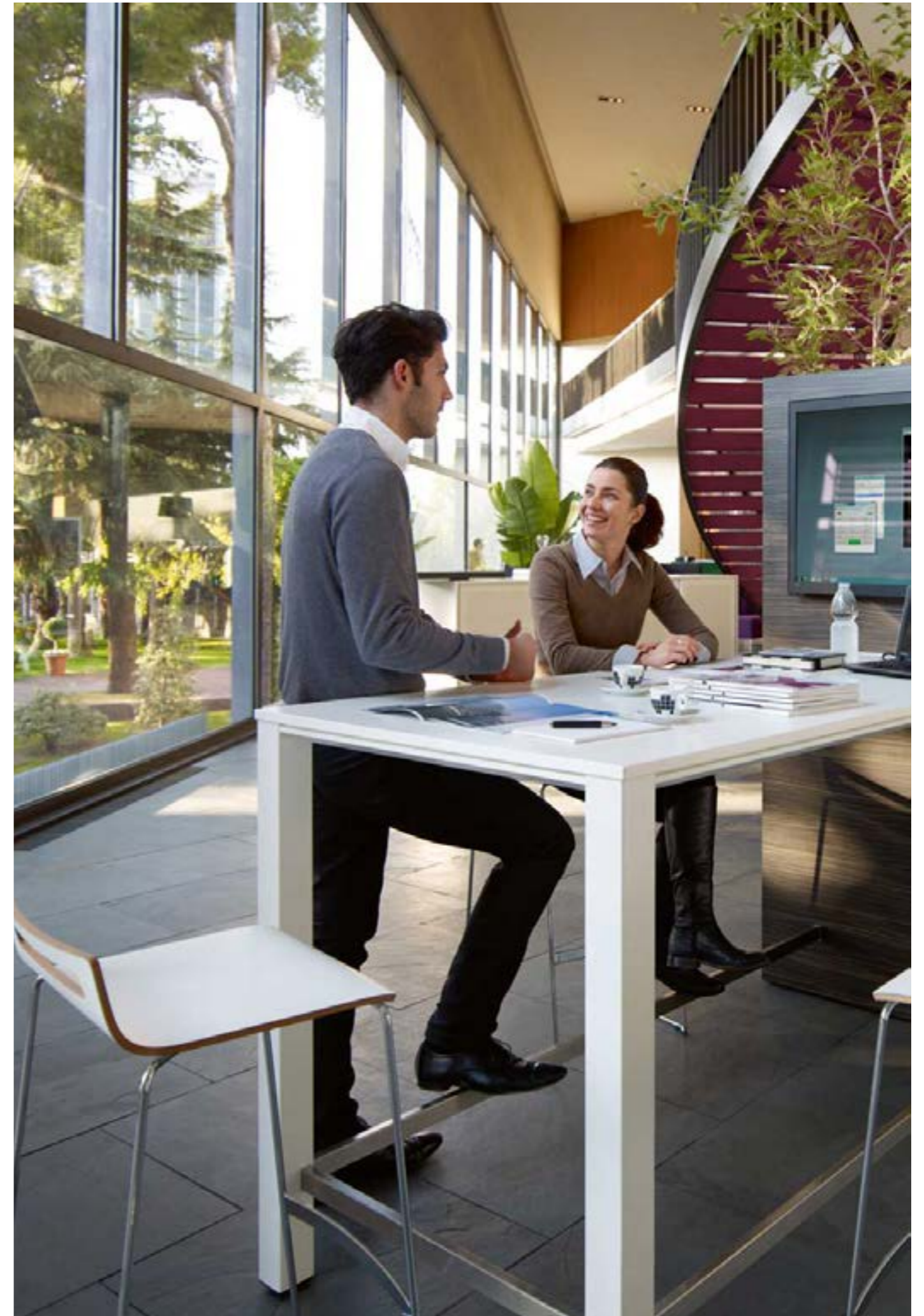


AT FUZE BUSINESS INTERIORS WE CREATE WORKSPACES PEOPLE LOVE WITH QUALITY PRODUCTS AND A COMMITMENT TO INCREASE PRODUCTIVE WELLBEING.

We are a cohesive team of interior designers, furniture specialists, and project managers who believe that a dynamic, healthy, creative space for employees is critical to the success of an organization, and that good office design focuses on allowing for optimal communication and efficiency. Through careful product selection, comprehensive product knowledge, and invaluable experience, our team is strategically positioned to deliver a solution to benefit our clients. As part of our commitment to help increase efficiency and productive well-being in the workplace, we stay on top of the latest trends in commercial office design, to deliver innovative solutions specifically addressing the needs of the client. Our mission? To create flexible, sustainable and efficient work environments which effectively enhance employee wellbeing and support collaboration and communication.



TONI DICKSON  
FUZE BUSINESS INTERIORS MANAGER



## FUZE BUSINESS INTERIORS THE TEAM

We are a team of qualified and experienced furniture specialists, interior designers, and project managers who are passionate about our work and about your workspace. We are available for large or small projects. Give us a call with any questions, we're happy to help.



---

**Brett Anslow**  
Fuze Business Interiors  
Director

---

**Stephanie Hopkins**  
Senior Interior Designer  
/ Furniture Specialist  
[stephanie@fuzeinteriors.co.nz](mailto:stephanie@fuzeinteriors.co.nz)

---

**Portia Jackson**  
Marketing &  
Communications  
[portia@fuzeinteriors.co.nz](mailto:portia@fuzeinteriors.co.nz)

---

**Toni Dickson**  
Fuze Business Interiors  
Manager  
[toni@fuzeinteriors.co.nz](mailto:toni@fuzeinteriors.co.nz)

## FUZE BUSINESS INTERIORS OUR SHOWROOM

You are welcome to visit our Auckland showroom during normal business hours or by appointment.

### AUCKLAND

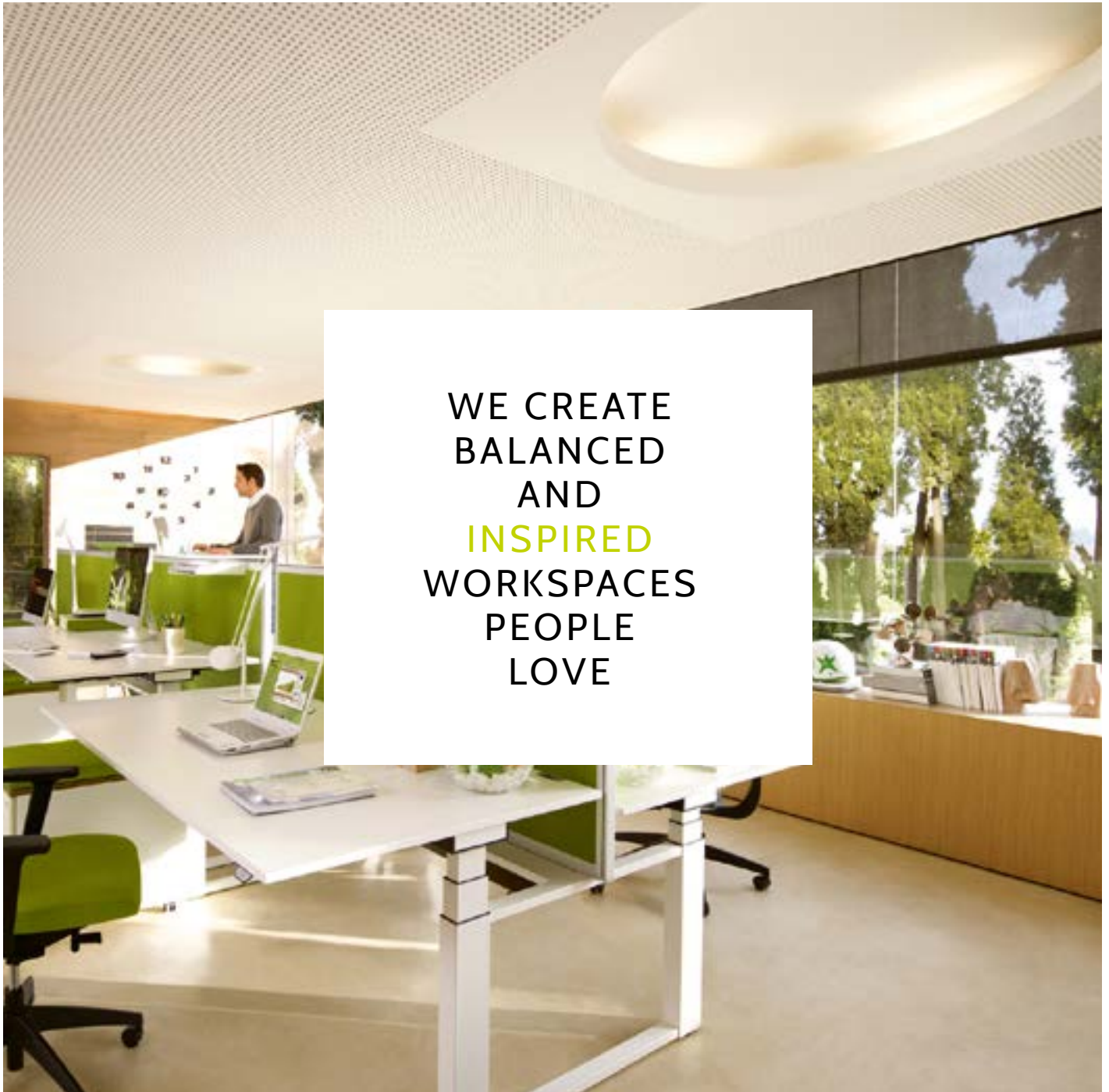
319 E Tamaki Rd,

East Tamaki, Auckland

Phone: 09 309 1710

Hours: 8:30am - 5:00 pm





WE CREATE  
BALANCED  
AND  
**INSPIRED**  
WORKSPACES  
PEOPLE  
LOVE

---

Auckland Showroom  
319 E Tamaki Rd,  
East Tamaki, Auckland  
Ph: 09 309 1710



[FUZEINTERIORS.CO.NZ](http://FUZEINTERIORS.CO.NZ)  
[SITSTANDDESKS.CO.NZ](http://SITSTANDDESKS.CO.NZ)