

SITSTAND

FUZE BUSINESS INTERIORS

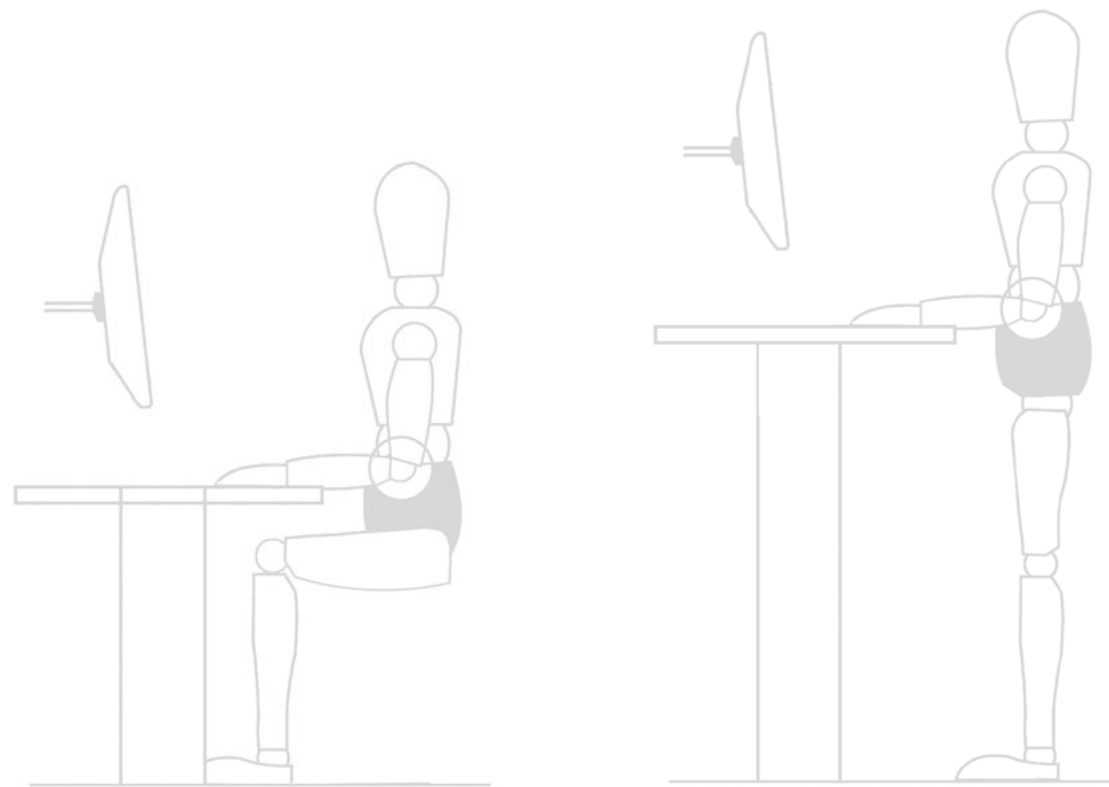
AT WORK

SIT
STAND
DESKS

HEALTHY
WORK
SPACES



WINTER 2022



**You can choose when
to sit and when to
stand so you don't
get restless and
uncomfortable during
your work day.**

SIT STAND DESKS

THE BENEFITS

SIT STAND DESKS IN THE WORKPLACE ARE BECOMING INCREASINGLY POPULAR IN NEW ZEALAND. THE NEGATIVE IMPACT THAT SITTING AT A DESK ALL DAY HAS ON YOUR HEALTH AND WELLBEING IS NOW COMMON KNOWLEDGE,

Let's take a look at why sit stand desks are fast becoming commonplace in the workplace:

Doctors like Sit Stand Desks

Sitting all day slows your metabolism, puts pressure on your organs, strains your muscles, and the inactivity creates lethargy and contributes to slower brain function. Studies show that even spending time at the gym each day doesn't offset the damage done by sitting all day. Alternating between sitting and standing to work has shown to decrease existing back pain, improve circulation, decrease fatigue, increase fat burning, reduce the risk of major diseases, and even prolong your life. The key is to be active and alternate between sitting and standing - even standing at your desk for just 10 minutes every hour will provide benefits.

Management likes Sit Stand Desks

Providing sit stand desk options in the workplace creates a more productive environment. Employees using sit-stand desks and break-out spaces are more likely to engage with one another in a more natural and impromptu way, providing immediate and spontaneous communication as opposed to employees in a more traditional, less fluid, and limiting environment. The health benefits gained by employees will see productivity levels rise, retention increase, and less spent on health cover overall.

We all like Sit Stand Desks

Testimonials reveal that using electric sit stand desks in the workplace can offer a liberating, social and healthy experience, which provides an overall sense of increased well-being and happiness.

CONSET DESKS

3 YEAR WARRANTY
On Conset frames



CON-33 SIZES & PRICING

1200L x 750D - \$640 +GST

1600L x 750D - \$670 +GST

1800L x 750D - \$715 +GST

SPECIFICATIONS

Height Range: 680mm - 1180mm

Lift Capacity: up to 80kg

Frame Color: White

DESCRIPTION

An elegant and stylish desk designed with a single telescopic open frame. The square columns give this desk a modern look, which makes it suitable for all kinds of office environments. The CON-33 is available in white only. Quick and easy to assemble.



2022
CONSET
SPECIAL

THE CONSET RANGE OF HEIGHT ADJUSTABLE ELECTRIC DESKS AND WORKSTATIONS REPRESENT THE BEST VALUE FOR PRICE, DESIGN, AND FUNCTION. THE MOST POPULAR IN OUR RANGE OF SIT STAND DESKS, THE CONSET DESKS HAVE BEEN INSTALLED IN HOME OFFICES AND CORPORATE ENVIRONMENTS ACROSS THE COUNTRY.



CON-43 SIZES & PRICING

1200L x 700D - \$775 +GST

1600L x 750D - \$805 +GST

1800L x 750D - \$850 +GST

SPECIFICATIONS

Height Range: 650mm - 1250mm

Lift Capacity: up to 100kg

Frame Color: White

DESCRIPTION

A 2 column desk with a sophisticated look, an open double telescope frame structure and a clean cut. You can recognize the CON-43 by its square column and slender foot design. The robust frame makes the CON-43 a strong and durable desk for any office environment.



DUO II DESKS

THE DUO II ELECTRIC DESK-SYSTEM WITH PROGRAMMABLE CONTROLLER OFFERS AN ECONOMIC ALTERNATIVE TO OUR MORE INDUSTRIAL UNITS. QUIET AND SMOOTH OPERATING THESE DESKS ARE IDEAL FOR USE AS A SINGLE HEIGHT ADJUSTABLE OFFICE DESK OR FOR MULTIPLE PODS IN AN OPEN OFFICE SPACE. 10 YR MOTOR WARRANTY.

DUO II SINGLE DESK

Lift Capacity: up to 100kg
1200W x 750D - \$705 +GST
1600W x 750D - \$720 +GST
1800W x 750D - \$765 +GST



PRODUCT FEATURES

- Height adjustable from 695-1145mm
- Single Motor
- 80mm Cable port for cable access
- 3x Programmable height settings
- Fast and quiet operation (20mm per second)
- 100kg Weight rating
- Collision protection technology
- Recyclable Frame
- Assembly Required
- NZ Made Top

SUMMIT II DESKS

THE SUMMIT II IS A HIGHLY CONFIGURABLE SIT-TO-STAND DESK SYSTEM WHICH COMES IN A VST RANGE OF COLOURS, SHAPES AND SIZES. IT HAS SCALLOPED EDGE ON BACK TO BACK DESK FOR CABLE ACCESS AND THE SINGLE DESK HAS A CABLE PORT FOR CABLE ACCESS. FAST & QUIET, THESE DESKS ARE A GREAT OPTION FOR HOME OR COMMERCIAL OFFICE USE.

SUMMIT II SINGLE DESK

Lift Capacity: up to 140kg
1200W x 750D - \$810 +GST
1600W x 750D - \$820+GST
1800W x 750D - \$865 +GST

SUMMIT II WORKSTATION

Lift Capacity: up to 210kg
1600W x 1600W x 700D - \$1455 +GST
1800W x 1800W x 700D - \$1485 +GST

SUMMIT II 2 PERSON POD

Lift Capacity: up to 140kg ea.
Please enquire for pricing

SUMMIT II SPECIFICATIONS

Height Range: 615H - 1255H
Speed: 30mm per second
3 Programmable height settings
Frame: Black, Silver or White
Desktops available in custom sizes.
10 yr warranty - includes motor



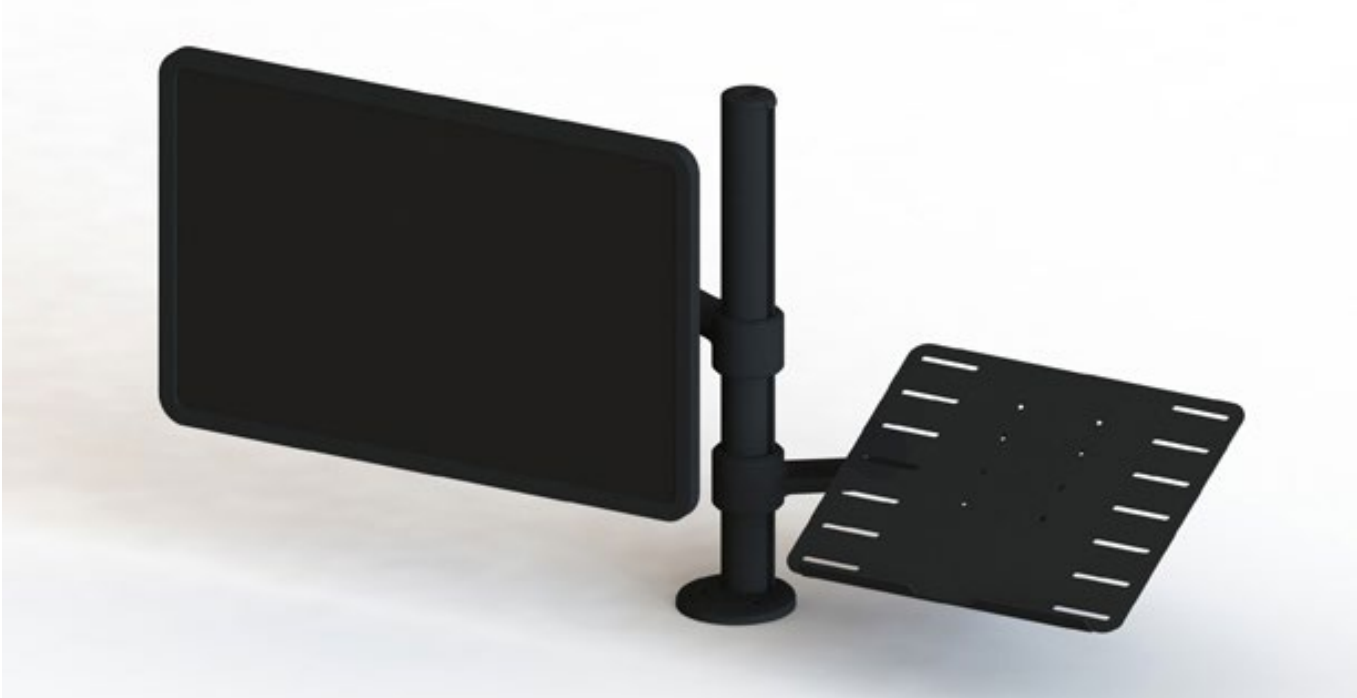
PRODUCT FEATURES

- Cleverly integrated desk system
- Vast range of colours, shapes and sizes
- Top has scalloped edge on back to back desk for cable access
- Individual desk has a cable port for cable access
- 3 x programmable height settings, with LCD display
- Fast and quiet operation (30mm per second)
- Weight-rating up to 140kg
- Corner desk weight-rating up to 210kg
- 10-year warranty includes the motor

MONITOR ARMS

SITSTAND
DESK
OPTIONS

THE USE OF A MONITOR ARM KEEPS YOUR NECK FROM STRAINING WHEN VIEWING YOUR SCREEN FROM A SITTING OR STANDING POSITION. NOT ONLY DOES IT PROVIDE THIS ERGONOMIC ADVANTAGE, BUT IT ALSO FREES UP VALUABLE DESK SPACE. TALK TO OUR TEAM ABOUT THE MOST SUITABLE MODEL FOR YOUR REQUIREMENTS.



C.ME Single Monitor Arm & Laptop Tray - POA

Vader Single Monitor Arm

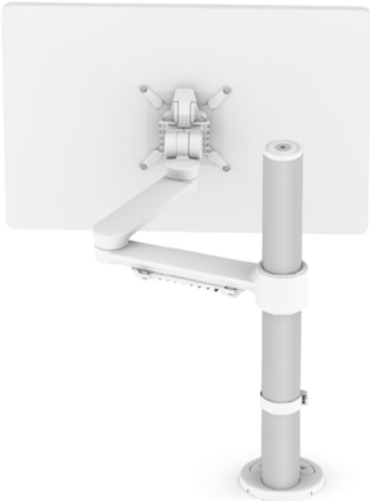
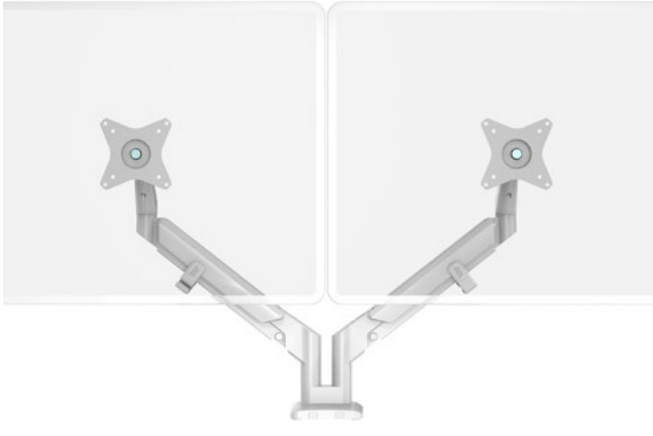
A20 Dual Post with Thin Client Mount - POA

C-Me Single Monitor Arm - POA

Vader Double Monitor Arm

A20 Dual Post with Thin Client Mount - POA

C-Me Double Monitor Arm - POA



CPU HOLDERS

WE HAVE MOUNTS TO CONNECT CPU'S AND THIN CLIENTS UNDER THE
DESK TOP SO THEY RISE AND FALL WITH YOU, ENSURING YOUR CABLE
LENGTHS REMAIN CONSISTENT.



Sylex AWCMCS23 Mount
POA

Teale Mount
POA

CBS Jaw Mount
POA

Thin Client Mount
POA

SITSTAND
DESK
OPTIONS



POWER OPTIONS

GET POWER TO YOUR DESK WITH MINIMAL INTRUSION WITH THESE POWER OPTIONS AND KEEP YOUR WORKSPACE FREE OF UNSIGHTLY CABLES WITH THE MOST STYLISH AND INNOVATIVE CABLE MANAGEMENT OPTION ON THE MARKET - THE CABLE SNAKE.



Konexus unit with GPO and fast charge USB A&C

Athena power rail with GPO and Fast charge USB A&C

Echo Duo with fast charge usb A&C and wireless charging

Nova underdesk with GPO and fast charge USB A&C

SITSTAND
DESK
OPTIONS



Alternating between sitting and standing to work is the healthiest option for those in an office job. You will need an ergonomic chair to use with your sit stand desk.

SIT STAND STOOLS AND CHAIRS

ERGONOMIC CHAIRS ARE DESIGNED TO SUPPORT THE BODY IN THE RIGHT PLACES FOR OPTIMAL HEALTH AND WELLBEING IN TODAY’S OFFICE.

Ergonomic office chairs have become a necessary requirement in today’s modern office environment. Employees who sit at a desk all day are at high risk of back injury, neck strain, lower back pain, and leg pain. We recommend alternating between sitting and standing to work using a sit stand desk in order to avoid health issues caused by sitting for too long.

When you do sit down, you can decrease the risk of associated injuries by using an ergonomic office chair. It is important that all employees who sit at a desk for any length of time have an office chair that supports the lower back and promotes good posture. A perching stool (eg. Dyna) can be used when you want to give your feet a short break but don’t want to sit down.



Sedus Quarterback
Multiple adjustments
Choice of 7 colours
Full upholstery option
POA

Buro Mentor
Multiple adjustments
Custom fabric option
Polished base option
POA

Konfurb Luna
Multiple adjustments
Available in grey or black
Polished base option
POA

Dyna Stool
Gas lift height adjustment
Moulded foam seat
Auto return swivel seat
POA

ABOUT FUZE

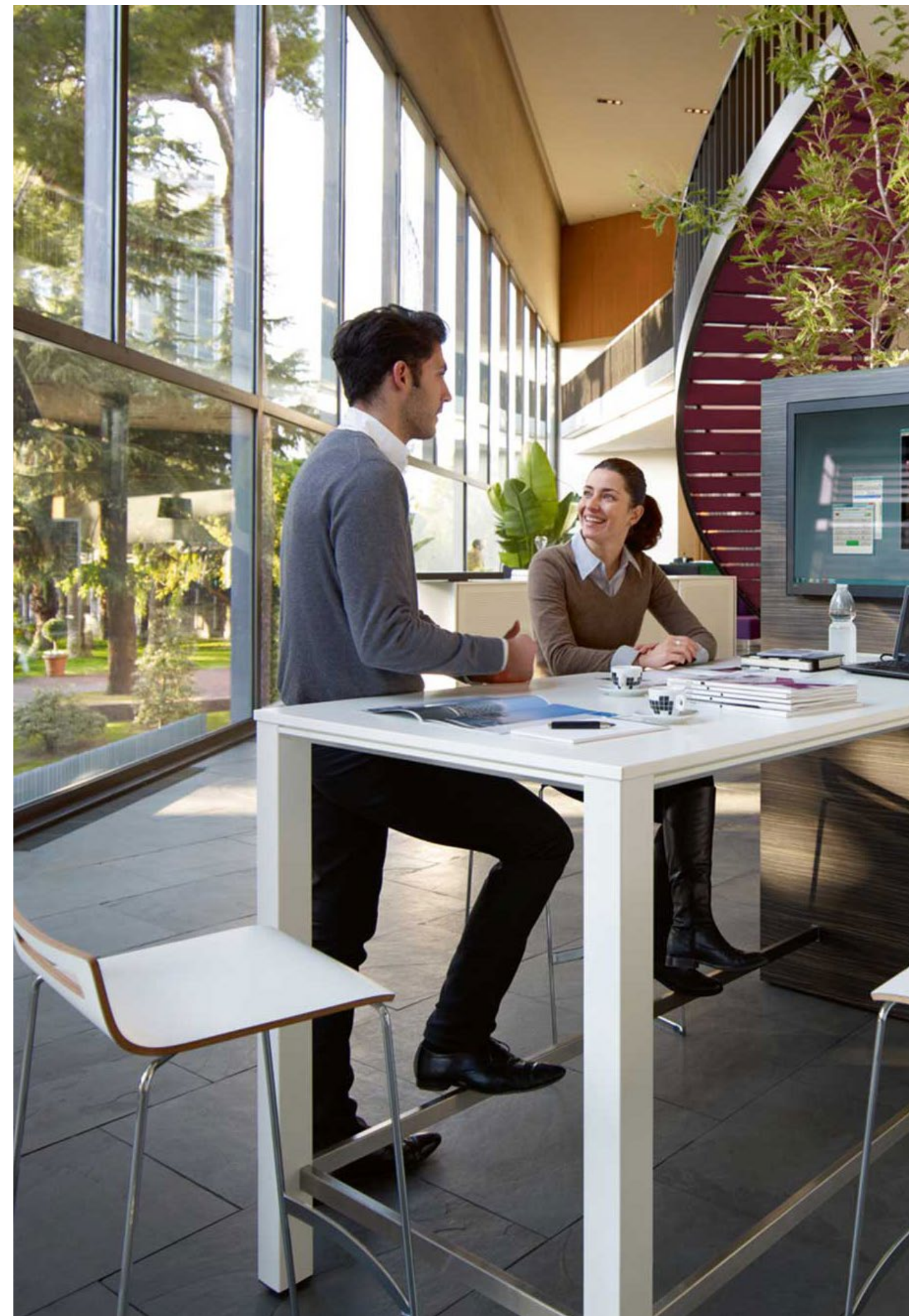


AT FUZE BUSINESS INTERIORS WE CREATE WORKSPACES
PEOPLE LOVE WITH QUALITY PRODUCTS AND A
COMMITMENT TO INCREASE PRODUCTIVE WELLBEING.

We are a cohesive team of interior designers, furniture specialists, and project managers who believe that a dynamic, healthy, creative space for employees is critical to the success of an organization, and that good office design focuses on allowing for optimal communication and efficiency. Through careful product selection, comprehensive product knowledge, and invaluable experience, our team is strategically positioned to deliver a solution to benefit our clients. As part of our commitment to help increase efficiency and productive well-being in the workplace, we stay on top of the latest trends in commercial office design, to deliver innovative solutions specifically addressing the needs of the client. Our mission? To create flexible, sustainable and efficient work environments which effectively enhance employee wellbeing and support collaboration and communication.



TONI DICKSON
FUZE BUSINESS INTERIORS MANAGER



FUZE BUSINESS INTERIORS
THE TEAM

We are a team of qualified and experienced furniture specialists, interior designers, and project managers who are passionate about our work and about your workspace. We are available for large or small projects. Give us a call with any questions, we're happy to help.



Brett Anslow
Fuze Business Interiors
Director

Stephanie Hopkins
Senior Interior Designer
/ Furniture Specialist
stephanie@fuzeinteriors.co.nz

Portia Jackson
Marketing &
Communications
portia@fuzeinteriors.co.nz

Toni Dickson
Fuze Business Interiors
Manager
toni@fuzeinteriors.co.nz

FUZE BUSINESS INTERIORS
OUR SHOWROOM

You are welcome to visit our Auckland showroom during normal business hours or by appointment.

AUCKLAND
319 E Tamaki Rd,
East Tamaki, Auckland
Phone: 09 309 1710
Hours: 8:30am - 5:00 pm





WE CREATE
BALANCED
AND
INSPIRED
WORKSPACES
PEOPLE
LOVE

Auckland Showroom
319 E Tamaki Rd,
East Tamaki, Auckland
Ph: 09 309 1710



FUZEINTERIORS.CO.NZ
SITSTANDDESKS.CO.NZ